

Product Highlights

Security

RADIUS support for increased security

Concurrent Dualband

Works in both 2.4GHz and 5GHz simultaneously

Load Balancing

To optimise high network traffic volume and redundancy

Aeroscout™ Technology

To identify and track assets equipped with an Aeroscout™ Radio Frequency ID (RFID) tag



DWL-6600AP

Wireless N Dualband Unified Access Point

Features

Flexible & Scalable

- Concurrent dualband - works in 2.4GHz and 5GHz simultaneously
- Flexible deployment, stand-alone or centrally managed by a wireless controller
- Wireless performance of up to 300 Mbps¹ network throughput in each band
- Self-configuring cluster enables easier provisioning
- Up to 32 Virtual Access Points (VAP) can be created from a single device
- Automatic load-balancing among neighboring Access Point
- Flexible Quality of Service (QoS) with Wi-Fi Multimedia (WMM)
- Supports AirMagnet™

Security

- WPA/WPA2 Personal
- WPA/WPA2 Enterprise
- WEP Encryption
- 802.1X User authentication
- MAC address filtering
- Rogue AP detection

Convenient Installation

- Can be easily mounted on a wall or ceiling
- 802.3af Power Over Ethernet enables installation in hard-to-reach locations
- Plenum rated housing to comply with fire regulations

The DWL-6600AP provides businesses with a scalable and flexible solution for their wireless network. With high data transmission speeds and Access Point load balancing, the DWL-6600AP offers high-quality and reliable wireless service. Versatile and powerful, the DWL-6600AP can be flexibly deployed as a standalone wireless Access Point or as a managed access point controlled by D-Link's Wireless Controller, DWC-1000. Businesses can start with standalone mode deployment, then migrate to a centrally managed system in the future.

Enhanced Performance

The DWL-6600AP delivers reliable wireless performance with maximum wireless signal rates of up to 300 Mbps in both the 2.4 GHz and 5 GHz mode. Support for Wi-Fi Multimedia™ (WMM) and Quality of Service (QoS) features makes the DWL-6600AP an ideal Access Point to prioritise audio, video, and voice applications. In addition, the load balancing feature ensures maximum performance in the wireless environment.

Self-Configuring Cluster

For businesses that need to deploy multiple Access Points (APs) but do not have the resources to tackle the complicated task of network management, the DWL-6600AP's self-configuring cluster feature offers the ideal solution. When a small number of DWL-6600APs are deployed on the network, they may be configured to form a self-configuring cluster. Once the administrator has completed configuring one Access Point, the same configuration can then be applied to all the remaining APs. Up to 16 APs may be used to form a cluster.

Unified Management

Alternatively, the DWL-6600AP can operate in conjunction with D-Link's Wireless Controller, DWC-1000. In this mode, multiple DWL-6600APs can connect directly or indirectly to one of these controllers to provide unparalleled security and wireless mobility for clients. Each DWL-6600AP will be continually tuned by the controller switches to provide the optimal Radio Frequency (RF) channels and transmission power for all mobile clients, providing them the better wireless signals in both 2.4GHz and 5.0GHz bands and uninterrupted wireless connectivity.

Security

The DWL-6600AP supports the latest standards in Wi-Fi security, including WEP, WPA, WPA2, and 802.1X. In addition, the DWL-6600AP supports up to 16 Virtual Access Points (VAP) per radio, for a total of 32 VAPs, which allows the administrator to assign different access privileges to different groups of users. When Station Isolation is enabled, the AP blocks communication between wireless clients on the same radio and VAP. Rogue APs in the network can be easily detected, and the administrator will be immediately notified of any security threat. When used together with D-Link's Wireless Controller, DWC-1000, the security can be enhanced further.

Convenient Installation

With an embedded antenna and a simple housing, the DWL-6600AP can be installed on a wall or ceiling and blends in with most office environments. Enclosed in a plenum-rated chassis, the DWL-6600AP adheres to strict fire regulations for placement in air passageways. For easy installation, the DWL-6600AP has integrated 802.3af Power over Ethernet (PoE) support, allowing installation of this device in areas where power outlets are not readily available.

3rd Party Support

The DWL-6600AP supports AirMagnet™, one of the industry's most accurate software solutions for planning, designing and troubleshooting wireless networks for optimal performance, security and compliance. AirMagnet™ calculates the ideal quantity, placement and configuration of APs for a successful WLAN deployment. It also allows IT administrators to test and diagnose wireless performance issues. Additionally, a RFID-based location tracking system is supported with Aeroscout™ technology. Aeroscout™ allows tracking of persons, objects and assets by means of RFID tags which have built-in location capabilities. This is especially useful within healthcare, manufacturing and security sectors.

D-Link Assist

Rapid Response Support

If the worst should happen to your network you need the very best support and fast. Downtime costs your business money. D-Link Assist maximises your uptime by solving technical problems quickly and effectively. Our highly trained technicians are on standby around the clock, ensuring that award-winning support is only a phone call away.

With a choice of three affordable service offerings covering all D-Link business products, you can select the package that suits you best:

D-Link Assist Gold - for comprehensive 24-hour support

D-Link Assist Gold is perfect for mission-critical environments where maximum uptime is a high priority. It guarantees four hour around-the-clock response. Cover applies 24/7 for every day of the year including holidays.

D-Link Assist Silver - for prompt same-day assistance

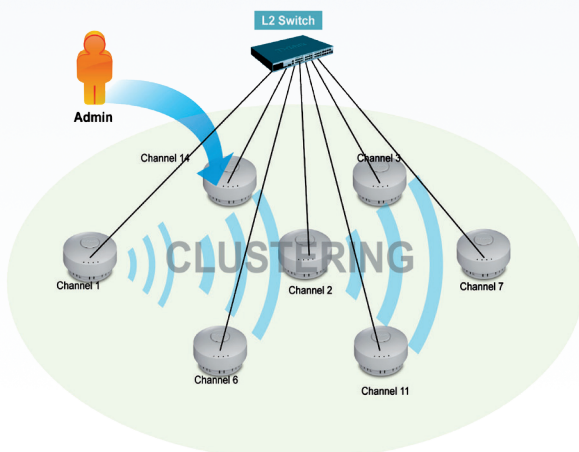
D-Link Assist Silver is designed for 'high availability' businesses that require rapid response within regular working hours. It provides a four hour response service Monday to Friday from 8am to 5pm, excluding holidays.

D-Link Assist Bronze - for guaranteed response on the next business day

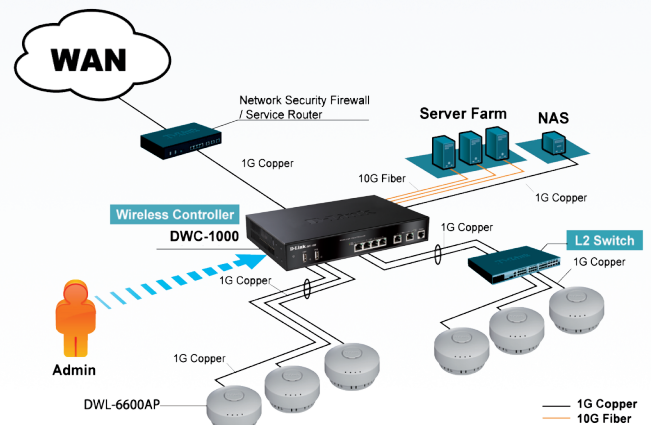
D-Link Assist Bronze is a highly cost-effective support solution for less critical environments. Response is guaranteed within eight business hours Monday to Friday from 8am to 5pm, excluding holidays.

D-Link Assist can be purchased together with any D-Link business product. So whether you're buying switching, wireless, storage, security or IP Surveillance equipment from D-Link, your peace of mind is guaranteed. D-Link Assist also offers installation and configuration services to get your new hardware working quickly and correctly.

Deployment Scenario: AP Clustering



Deployment Scenario: Unified Management



Technical Specifications	
Standards	
	<ul style="list-style-type: none"> • IEEE 802.11n • IEEE 802.11g • IEEE 802.11a • IEEE 802.3ab • IEEE 802.3u • IEEE 802.3 • IEEE 802.3af
Interfaces	
	<ul style="list-style-type: none"> • 1x Gigabit Ethernet (RJ-45) port (PoE-enabled) • 1x Console (RJ-45) port • 4x external antenna (Reverse SMA) connectors
Management	
	<ul style="list-style-type: none"> • Telnet - Secure (SSH) Telnet • Web Browser Interface • HTTP - Secure HTTP (HTTPS) • SNMP Support • AP Clustering
Security	
	<ul style="list-style-type: none"> • WPA™ - Personal • WPA2™ - Enterprise (802.11i) • WPA™ - Personal • WPA2™ - Enterprise (802.11i) • 64/128-bit WEP • SSID Broadcast Disable • MAC Address Access Control • Rogue AP Detection • Station isolation
VLAN	
	<ul style="list-style-type: none"> • 802.1q VLAN support (max. 64 dynamic VLANs)
SSID Support	
	<ul style="list-style-type: none"> • Multiple (up to 16 SSID per radio, 32 in total)
Quality of Services (QoS)	
	<ul style="list-style-type: none"> • WMM Wireless Priority • SpectraLink Voice Priority (SVP)
Wireless Frequency Range	
	<ul style="list-style-type: none"> • 802.11n: 2.4 ~ 2.497GHz/ 4.9 ~ 5.85GHz • 802.11b/g: 2.4 ~ 2.4835 GHz • 802.11a: 5.15 ~ 5.35 GHz / 5.725 ~ 5.825 GHz
Operating Modes	
	<ul style="list-style-type: none"> • Access Point (AP) • Wireless Distribution System (WDS)

Wireless N Dualband Unified Access Point

Technical Specifications	
3rd Party Support	
	<ul style="list-style-type: none"> • Integrated RFID recognition for Aeroscout devices to track wireless clients • AirMagnet™ software solutions for WLAN analysis and survey.
Antenna	
	<ul style="list-style-type: none"> • Internal Omni directional antennae (2x2 MIMO) • 4x external antenna (Reverse SMA) connectors
LEDs	
	<ul style="list-style-type: none"> • Power • LAN • 2.4 GHz • 5 GHz
Maximum Power Consumption	
	• 9.6 watts
Power Supply	
	• 12V/1 A
Physical	
	<ul style="list-style-type: none"> • Plenum-rated chassis • Weight: 500 g. • Dimensions (H x ø): 77.5 x 156 mm
Temperature	
	<ul style="list-style-type: none"> • Operating: 0 to 40 °C • Storage: -20 to 65 °C
Humidity	
	<ul style="list-style-type: none"> • Operating: 10% to 90% (Non-condensing) • Storage: 5% to 95% (Non-condensing)
Certifications	
	<ul style="list-style-type: none"> • FCC Class B • CE Class B • C-Tick
Optional D-Link accessories	
DPE-101GI	• 1-port Gigabit PoE Injector



For more information: www.dlink.eu

D-Link European Headquarters. D-Link (Europe) Ltd., D-LinkHouse, Abbey Road, Park Royal, London, NW10 7BX. Specifications are subject to change without notice. D-Link is a registered trademark of D-Link Corporation and its overseas subsidiaries. All other trademarks belong to their respective owners. ©2011 D-Link Corporation. All rights reserved. E&OE.

Updated 16/01/2012



D-Link[®]
Building Networks for People